

## Thermal management for electrical enclosures



### MUH

#### MECHANICAL HYGROSTAT User's manual

[www.alfaelectric.com](http://www.alfaelectric.com)

### WARNING

- Safety of MUH is warranted only by proper use of these instructions which must be kept.
- Installation must be done by qualified personnel only after power supply disconnecting
- Before any operation, switch off the power supply.
- Install the MUH only inside an electrical enclosure.
- Upstream of the electrical connection, an efficient disconnection system must be provided
- Protection against access to live parts must be warranty by installer.
- Don't install MUH in ambient with excessive moisture and dirt
- Installation position of MUH must be selected to ensure good ventilation. Take care that any internal components of enclosure don't obstruct air passage.
- Follow all technical data shown in this manual.

This manual contains the information necessary for the product to be installed correctly and also instructions for their maintenance and use; we therefore recommend that the utmost attention is paid to the following instructions.

Though this manual has been issued with the greatest care, ALFA ELECTRIC will not take any responsibility deriving from its use. The same applies to each person or Company involved in the issuing of this manual.

This document is the exclusive property of ALFA ELECTRIC which forbids any reproduction and divulgation, even in part, of the document, unless expressly authorized.

ALFA ELECTRIC reserves the right to make any formal or functional changes at any moment and without any notice.

## 1 - DESCRIPTION

### GENERAL DESCRIPTION

Hygrostat for DIN 35 mm. rail mounting typically used to control electrical enclosure heaters.

Features	MUH
Relative humidity setting range [RH%]	10-90 (set 90Rh% contact 1-2 always closed)
Relative humidity hysteresis [RH%]	5 (max 10)
Precision [RH%]	±4
NC at 240Vac resistive load [A]	2.2
NC at 120Vac resistive load [A]	4.4
NO at 240Vac resistive load [A]	5
NO at 120Vac resistive load [A]	10
Contact type	Change over
Operating temperature [°C]	-10/+50
Storage temperature [°C]	-45/+70

## 2 - INSTALLATION

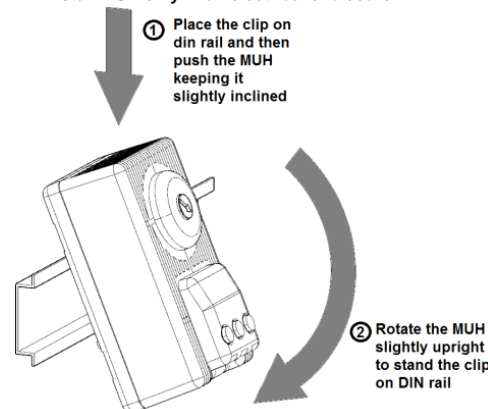
### 2.1 GENERAL DESCRIPTION

MUH is fitted by clip for DIN rail 35mm mounting.

### 2.2 INSTALLATION

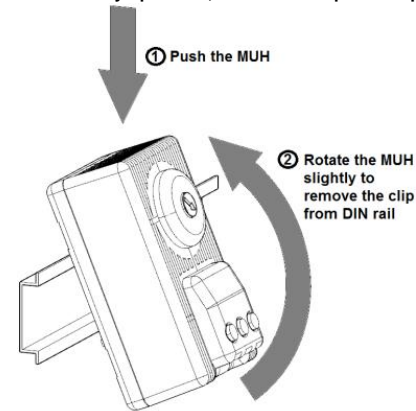
#### WARNING

- Install vertically (cables below controller) inside of electrical enclosure where temperature control is requested.
- Do not mount MUH near heat sources which could influence the proper temperature sensing.
- Do not operate in corrosive ambient air.
- Install MUH only in an electrical enclosure



## 3 - REMOVAL

- Before any operation, switch off the power supply



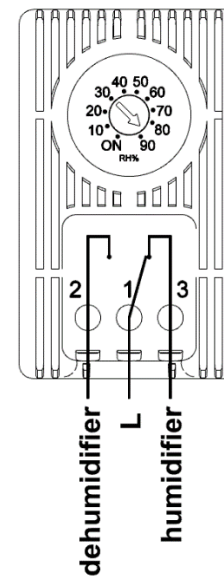
## 4 - ELECTRICAL CONNECTION

MUH connection must be done by trained electricians according to national electrical safety codes.

- Before any operation, disconnect cabinet
- Install MUH only in closed electrical cabinet connected to ground circuit following connection drawing
- Feeding must be disconnected when opening cabinet door.

Wire the MUH according to wiring diagram below:

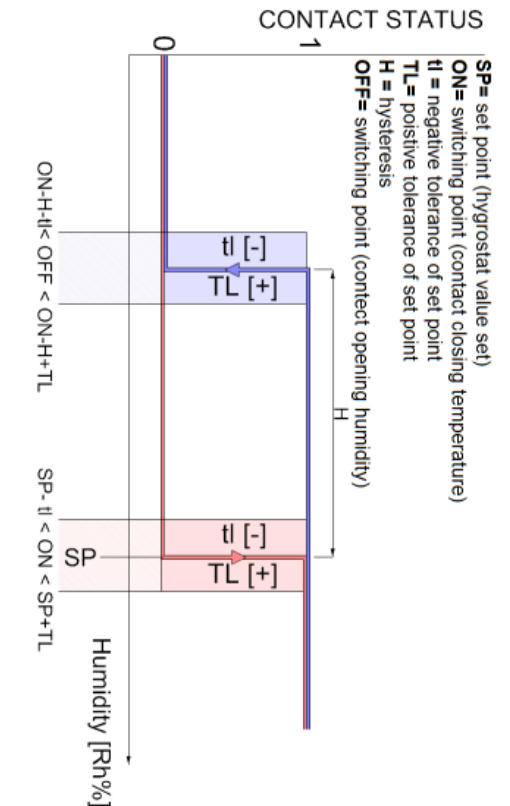
(3-pole terminal for 2.5 mm<sup>2</sup> wire)



## 5 - FUNCTIONING

MUH electrical contact changes status according to graph below:

0=humidifier status  
1=dehumidifier status



## 6 - CLEANING, MAINTENANCE AND DISPOSAL

Cleaning and maintenance must be done only by specialized people after switching off power supply.

For cleaning use only a wiper and compressed air.

MUH must be disposed of separately from ordinary household wastes